



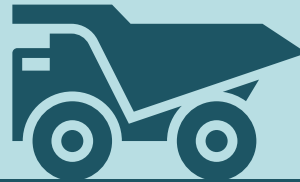
NORTHERN TERRITORY

In 2020–21



73%

Gas share of energy consumption



53%

Mining share of energy consumption

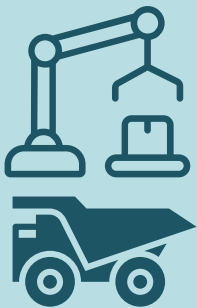


26%

Oil share of energy consumption

85%

Gas share of electricity generation
Up from 66% (2010-11)



51%

of total electricity generation from mining and manufacturing



18%

Renewables electricity generation growth since 2020

\$180 million

Economic value created for every PJ consumed

Down \$29 million over 10 years

582 GJ



Energy consumption per person