

NEW SOUTH WALES

In 2018–19



42%

Coal share of
energy
consumption



1/4 of Australian energy consumption

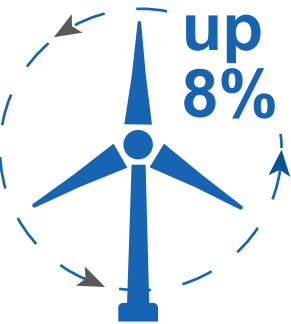


35%

Transport share of
energy consumption

1/2

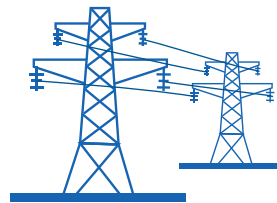
Gas use
is for
manufacturing



up
8%

19%

Renewables
share of
electricity
generation
in 2019



77%

Coal share of
electricity
generation
in 2019

\$399 million

Economic value created
for every PJ consumed

Up \$99 million over 10 years

181 GJ



Energy consumption per person